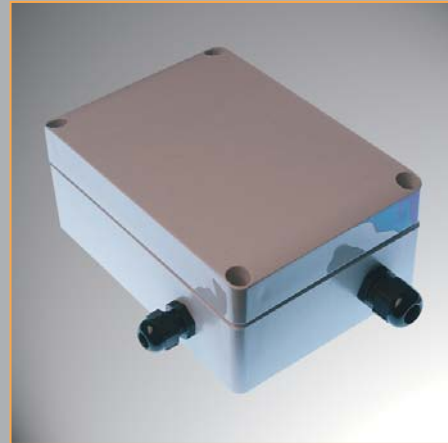
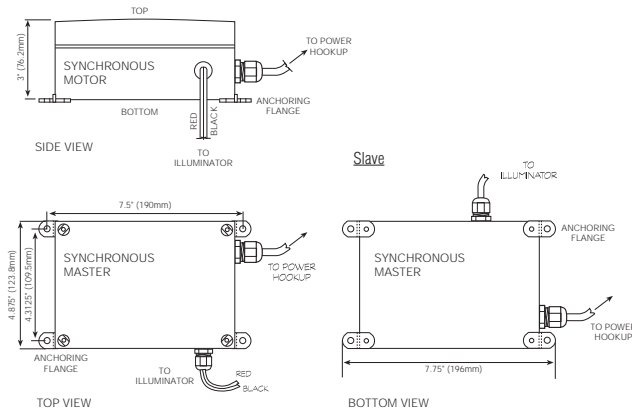


External Master



The SV600C Master Control System unit is designed to synchronize the color wheel rotation between two or more illuminators. The SV600C is an external unit separate from the illuminator. It can only be used with illuminators that have an internal slave control and sensor. The SV600C is parallel wired to each illuminator. The SV600C can be used with the SV1500, FIBERPRO, and ECLIPSE II.

Features: Color change interval duration can be set to: 1, 2, 4, 8, 16, 32, 64, or 128 minutes or seconds.

600C	DESCRIPTION	CARTON QTY
SV600C	Synchronous control system	1 each
SVCC10	Data cable for SV600C	Per foot

SPECIFICATIONS:

Electrical Rating:

- 120 VAC, 60 Hz
- 220 VAC, 50 Hz

Dimensions:

- 3.21" (81.5mm) x 4.92" (125mm) x 7.67" (195mm)

Construction:

- Plastic

Location Listing:

- Indoor/outdoor

Maximum Number Illuminators:

- 35

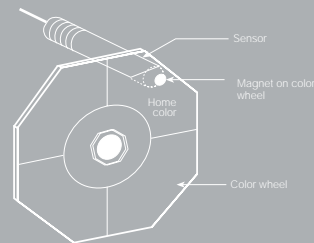
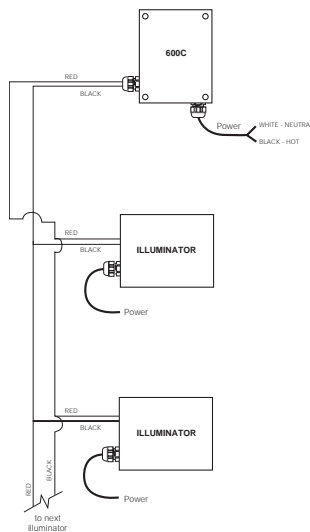
Wire Type:

- 600 V, type TC control cable
- 18 AWG, 2 conductor
- Vinyl nylon tray cable
- UV resistant, suitable for direct burial

Standards:

- UL / cUL

IP Rating: 23



The SV600C has the following operating parameters:

- Modes:**
- Four or eight color wheel
 - Stop at each color (4 color only)
 - Stop at "Home" only (see above figure)
 - Minute or second settings
- Dwell:**
- Sets the time the color wheel will remain on each color (for 4 color wheels only) or at the "Home" position. Home Position is where the magnet on the color wheel is aligned with the sensor.