

FIBERPRO	VOLTAGE	ENDGLOW COLOR WHEEL	CONTROL SYSTEM
<b>150 watt metal halide illuminator</b>	<b>120 - 120 VAC, 60 Hz</b> <b>220 - 220 VAC, 50 Hz</b> <b>230 - 230 VAC, 50 Hz</b>	<b>N</b> - none <b>4S-SB</b> - 4 Standard <b>8S-SB</b> - 8 Standard	<b>N</b> - none <b>S</b> - Synchronous <b>D</b> - DMX 512 compatible
<b>LAMP</b>	<b>240 - 240 VAC, 50 Hz</b> <b>277 - 277 VAC, 60 Hz</b>	<b>4C-SB</b> - 4 Custom <b>8C-SB</b> - 8 Custom	<b>DS</b> - Dimming system <b>MS</b> - 300C master module/ sync
<b>40-GA - 4,000K</b> <b>30-GA - 3,000K</b>		Note: Refer to accessories Catalog for color	

**SPECIFICATIONS:**

**UL Listed:**

Wet and dry locations

**Electrical Rating:**

- 120 VAC, 60 Hz / 4.5 Amps (start up)
- 120 VAC, 60 Hz / 2.3 Amps (running)
- 220-240 VAC, 50 Hz / 3.5 Amps (start up)
- 220-240 VAC, 60 Hz / 2.0 Amps (running)

**Lamp:**

- 150 watt metal halide
- 10,000 hours average life
- 6,000 hours color shift
- Vision 2 Technology

**Fiber Capacity:**

- 500 fibers w/ 0.75mm fibers
- 288 fibers - Ultra SideGlow®(1mm)

**Power Consumption:**

- 300 Watts, maximum

**Safety Features:**

- Internal 185°F / 85°C thermal protector

**Ambient Operating Temperature:**

- -20°F to 110°F
- -29°C to 44°C

**Dimensions:**

- 8.5"(W) x 14.625 (L) x 6.125" (H)
- 216mm x 372mm x 156mm
- 14.125"H (359mm) with door open
- Allow an additional 5" (127mm) for fiberhead and fiber to "W" position.

**Weight:**

- 23 lbs.
- 10.5 kg

**Material / Finish:**

- Galvanneal
- Powder coating, no bare metal inside or outside
- Water, corrosion and chemical resistant

**Mounting / Installation:**

- Surface or wall mount (wall mount - horizontal fiberhead direction only)
- \* Must be flush mounted to surface for proper air separation between compartments.

**Ventilation:**

- 115 CFM enclosure cooling
- 28 CFM fiber tunnel cooling
- Recommended distance from surface, 6"
- Recommended distance from another light source, 24"

**Warranty:**

- 1 Year (excluding lamp)

**Standards:**

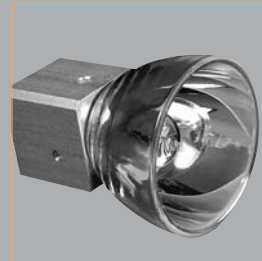
- UL / cUL

**IP Rating:** 23



Wet and dry UL listed illuminator with a 150 watt metal halide lamp rated at 10,000 hours average life. Recommended for SideGlow® and EndGlow® cable, interior and exterior applications.

	FIBERPRO 150
INDOOR	✓
OUTDOOR	✓
FIBER CAPACITY* *.75mm	500 288(1mm)
CE / UL CUL	✓
LAMP TYPE	150W HID
LAMP LIFE	10,000 HRS
POWER (VAC)	120 220 277
CONTROL SYSTEM OPTION	SYNC DMX DS
MOUNTING	WALL HORIZ
COLOR WHEEL OPTION	4-COLOR 8-COLOR



FIBERPRO Replacement Lamp

Part No.: 30-GA (3000K)  
40-GA (4000K)

Description: 150 watt MH/HID replacement lamp for illuminator: FIBERPRO.

Carton Qty: 1

	FIBERPRO 150
SIDEGLOW®	✓
STAR CEILING	
ARCHITECT LIGHTING FIXTURES	✓
CHANNEL LETTERS	✓
LANDSCAPE	
POOL & SPA	